

PANAMA CHOCKS

Deck Mounted Panama Chock DIN 81915



Material:

Cast Steel GS-38.3 DIN1681 or ZG230-450 or equivalent

Surface Treatment:

Sand Blasting to SA2.5+ one coat epoxy zinc rich primer

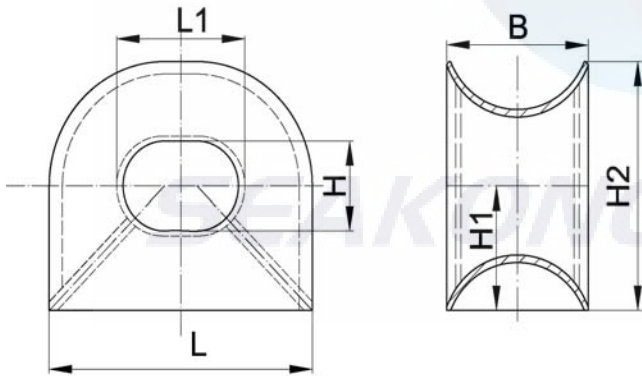
Heat Treatment:

Full Annealing

NOTE: Casting surface should be no sand burning crack,shrinkage cavity,pits,sand layer or any other defect that influence the strength and appearance. All the edges to be rounded and region that contact with rope must be smooth.

Type C2~C8: Single Chock Acc. To Panama Rules

Type C12~C32: Double Chock Acc. To Panama Rules



Type	SWL (KN)	H	H1	H2	L	L1	B	Weight (Kg)
C2	20	115	157.5	315	360	160	200	29
C3	30	140	195	390	450	200	250	48
C5	50	180	240	480	550	250	300	85
C8	80	225	292.5	585	680	320	360	136
C12	125	270	355	710	840	400	440	211
C20	200	320	420	840	1020	500	520	325
C32	320	400	550	1100	1300	600	700	840

Qingdao Seakong Marine Machinery Co.,Ltd

No.19 Qutangxia Road, Shinan District,Qingdao City, China

Tel. +86 532 89922862 Fax. +86 532 89922862

Email: sales@seakongmarine.com Web: www.seakongmarine.com