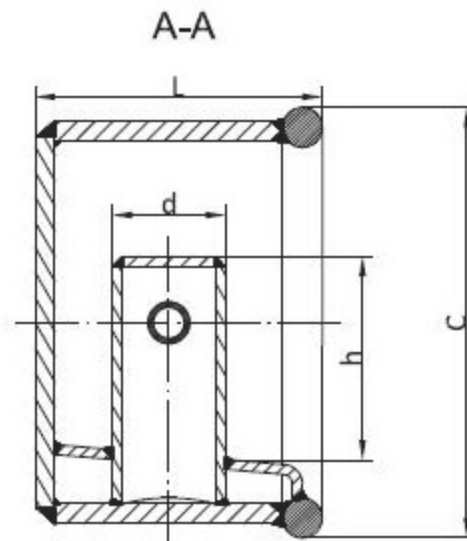
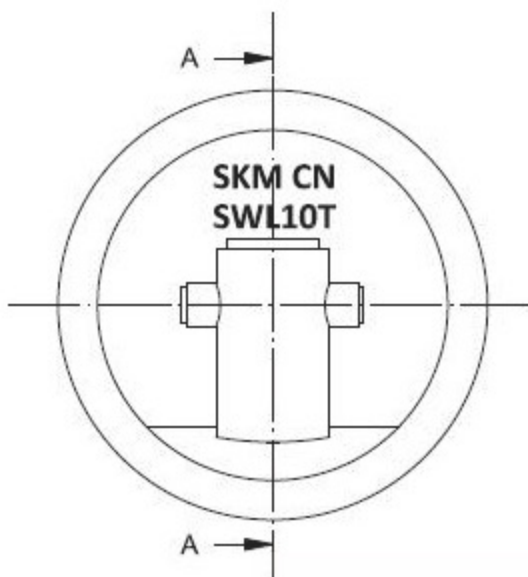


# MARINE BOLLARDS

## SKM Welded Recessed Bollard Type I



DN	SWL (kN)	Dimensions (mm)			
		d	C	L	h
5	49	101.6	434	282	203
10	98	114.3	434	282	203
15	147	114.3	483	294	235
20	196	139.7	483	314	226
50 *	490	273	837	546	427
64 **	628	273	837	552	407
90 ***	883	323.9	930	635	440
125	1226	355.6	1028	718	490

### Material

Round Bar: Q235B or S235J2

Remaining Steel: Q345B or S355J2

### Surface treatment:

Sa 2.5 + Hempel primer ZS 15890 grey

Constructed in compliance with IMO

Guidance, MSC/Circ.1175 of 24 May 2005 and IACS UR A2 (Rev.3).

Design load 1.25 x SWL

Allowable stresses 100/60 % of min yield point

Suitable strengthening at deck/shell bulwark by the yard.

Supporting hull structure and reinforcement beneath to be arranged by the yard to the satisfaction by the classification society.

## Qingdao Seakong Marine Machinery Co.,Ltd

No.19 Qutangxia Road, Shinan District, Qingdao City, China

Tel. +86 532 89922862 Fax. +86 532 89922862

Email: [sales@seakongmarine.com](mailto:sales@seakongmarine.com) Web: [www.seakongmarine.com](http://www.seakongmarine.com)