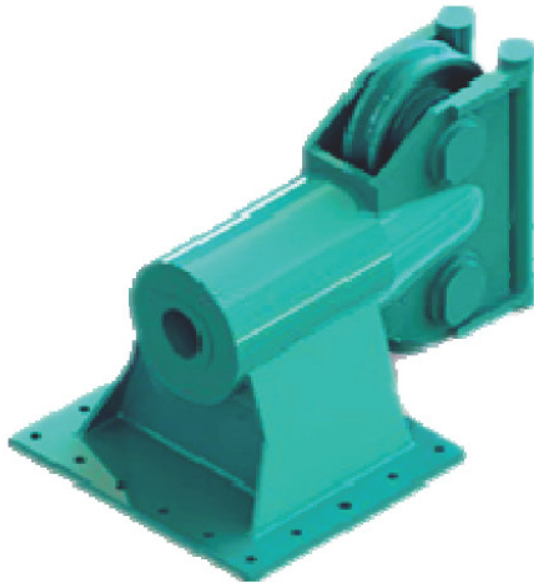


SWIVEL FAIRLEADS

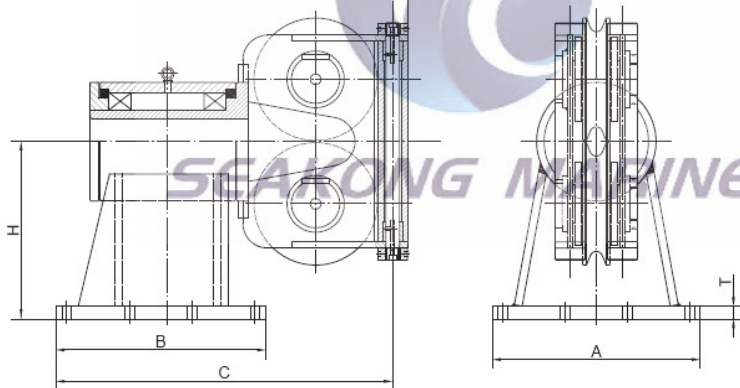


STANDARD FEATURES

- Designed for breaking strength of wire with 90° wrap on sheave and +/- 90° rotation of swivel head
- Cast Steel Sheave / Plate Machined Sheave with Hardened Rope Groove for Longer Life
- Sealed Grease Lubricated Tapered Roller Bearings in Sheave and Swivelhead
- Weld Down Mounting Base
- Removable Guide Roller
- Epoxy Primer Coating

OPTIONAL FEATURES

- Tail Sheaves / Tail Rollers
- Bolt down mounting base
- Load monitoring system
- Special sheaves for high performance synthetic ropes
- Paint to your specifications
- Third party certification



Wire Rope Dia.		Sheave Dia.(mm)	Dimensions (mm)					Weight (kg)
(mm)	(inch)		A	B	C	T	H	
25	1	254	486	420	722	20	277	210
32	1-1/4	305	570	492	839	20	342	365
38	1-1/2	406	780	782	1266	30	489	850
44	1-3/4	508	1064	914	1467	40	546	1520
50	2	610	1219	1067	1763	40	648	2600
64	2-1/2	762	1372	1219	2045	50	800	4000
76	3	938	1800	1500	2634	50	950	7200
82	3-1/4	1020	1800	2000	3186	50	1100	10800

Qingdao Seakong Marine Machinery Co.,Ltd

No. 19 Qutangxia Road, Shinan District, Qingdao City, China

Tel. +86 532 89922862 Fax. +86 532 89922862

Email: sales@seakongmarine.com Web: www.seakongmarine.com